

# Attention Protein and Peptide Analysts!

## Are you using the best HPLC columns for your separations?

ACE 300Å ultra inert HPLC columns are manufactured using advanced technology that virtually eliminates the negative effects of silanols and metal contamination on polypeptide separations.

### Ultra Inert Columns for Improved Peak Shape and Reproducibility

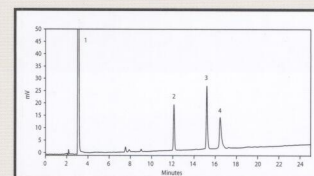
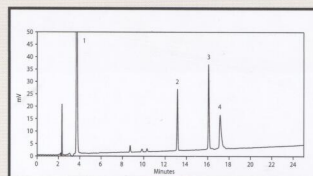
Excellent peak shape and reproducibility have established ACE HPLC columns as the finest available. This quality is now available for biochemists desiring the utmost in performance and reproducibility for the separation of peptides, proteins and other high molecular weight biomolecules.

The ultra-inert characteristics of the ACE C18-300 columns permit the use of as little as 0.005% TFA in the mobile phase. Competitor columns often show unacceptable peak tailing even when using as much as 0.01% TFA. The ability to run at reduced TFA concentrations results in increased sensitivity when interfacing to mass spec.

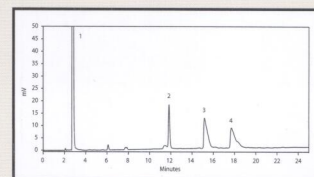
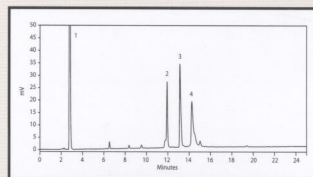
ACE 5 C18-300  
Ultra-inert silica

Vydac 218TP  
Lower purity 'active' silica

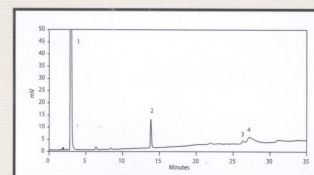
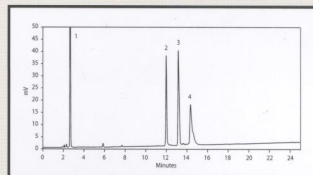
0.1% TFA



0.01% TFA



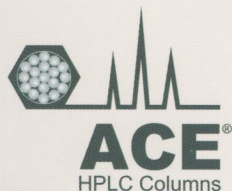
0.005% TFA



Column: 250 x 4.6mm, 5µm C18 300Å  
Mobile Phase: A: TFA in H<sub>2</sub>O  
B: TFA in MeCN  
(% TFA as specified above)  
10% to 55% B in 37.5 mins.  
Flow Rate: 1.5ml/min

Detection: UV 200nm  
Compounds: 1. Gly-Tyr  
2. Oxytocin  
3. Angiotensin II  
4. Neurotensin

### Fast Delivery



Strict control over the manufacturing process for ACE columns ensures that your research will never be kept waiting because of delayed delivery of a column. Sufficient quantities of the most popular column dimensions are maintained in inventory so that delivery within 24 hours is possible.

# ACE 300Å HPLC Columns

## Product Specifications

Phase	Functional Group	Endcapped	Particle Size ( $\mu\text{m}$ )	Pore Size ( $\text{\AA}$ )	Surface Area ( $\text{m}^2/\text{g}$ )	Carbon Load (%)
C18-300	Octadecyl	Yes	3, 5, 10	300	100	9.0
C8-300	Octyl	Yes	3, 5, 10	300	100	5.0
C4-300	Butyl	Yes	3, 5, 10	300	100	2.6
CN-300	Cyano	Yes	3, 5, 10	300	100	2.6
Phenyl-300	Phenyl	Yes	3, 5, 10	300	100	5.3

ACE 300Å HPLC columns are available in a wide range of dimensions from capillary to preparative scale. ACE 100Å HPLC columns are also available for the analysis of smaller molecules. Contact your distributor for a catalogue detailing the full product range.

### Fast Delivery Guarantee



All popular ACE 300Å column dimensions are available from stock for immediate delivery. We understand that research delays caused by column delivery concerns are unacceptable.

### Reproducibility Guarantee



Independent laboratories have concluded that ACE HPLC columns are the most inert, highest performing phases available. The virtual elimination of the negative effects of silanols on HPLC separations ensures reproducible chromatography of proteins and peptides.

### Performance Guarantee



We claim that ACE 300Å columns are the best choice for bioanalytical separations, and we stand by this claim. If ACE does not outperform your existing column (of equivalent phase, particle size and dimensions), send in your comparative data within 60 days and keep the column **FREE OF CHARGE**.

To place your order contact:

[www.ace-hplc.com](http://www.ace-hplc.com)

©ACE is a registered trademark of Advanced Chromatography Technologies (ACT).

